

Prep:

Remove the plastic cover with a small screwdriver from the side on the forward D Rings behind the rear seats. Remove the forward most bolt from the D-Ring using a 10mm socket. 3:30



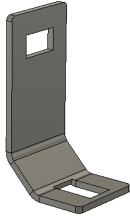
Remove the plastic side panels covering the factory bolt locations on the body tub (used for main bracket hardware)



Place a rag or piece of cardboard in the gap between the body tub and the inner plastic to avoid dropping a bolt between them.



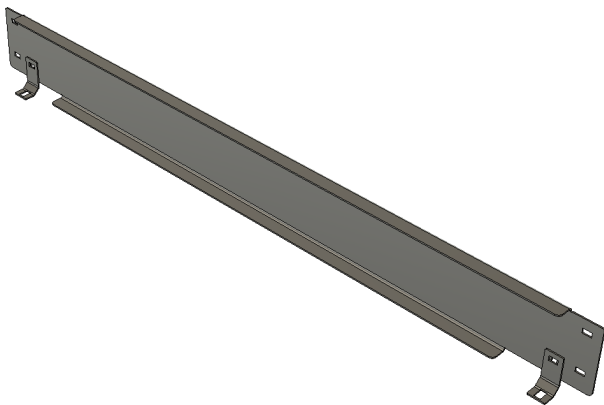
Floor Brackets:



Install the floor brackets with the horizontal facing upward over the forward most D-Ring hole 5:30



Lower Wall Panel:



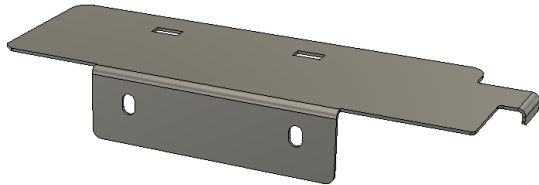
Install the lower wall assembly (with the 2 slots on the bottom) forward of the floor brackets (NOTE: it helps to add the carriage bolts in the inward slots prior to lowering the wall in) add a washer and nylock nut to the rear and snug with a 7/16 socket. Do not tighten them all the way.



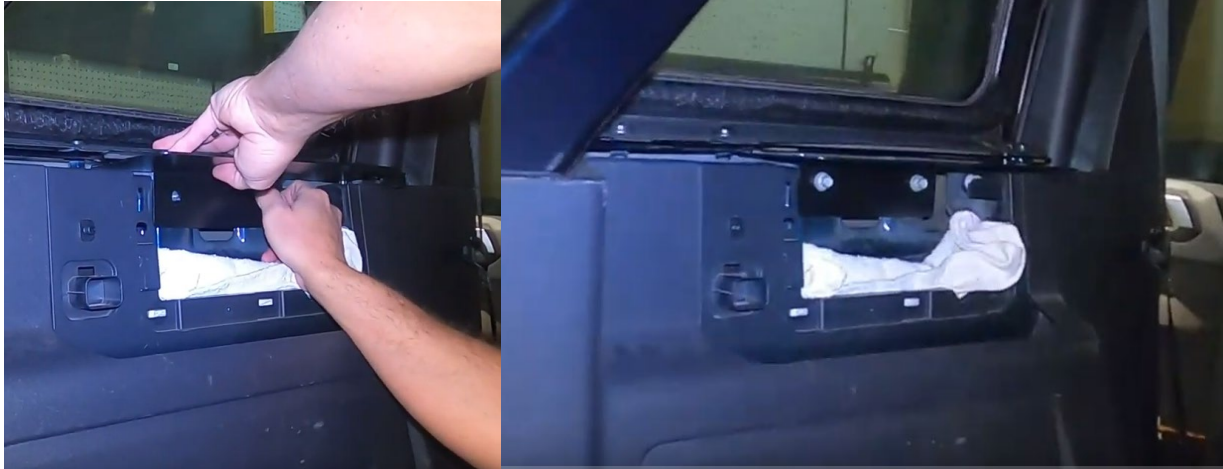
Center the wall with gaps on both sides and tighten, hold the wall level to the floor and tighten the carriage bolts. 10:10

Main Brackets:

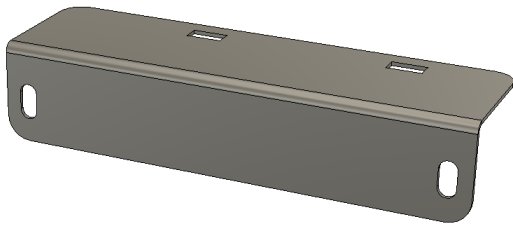
Hard Top Brackets:



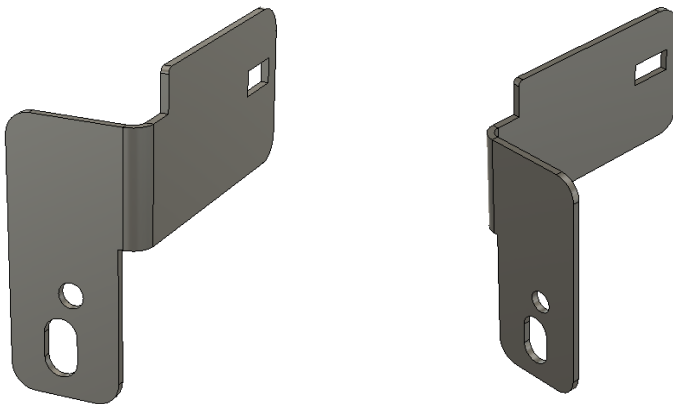
These are bent left and right with the downward tab facing forward. Use the bolts provided in the hardware to secure the brackets to the factory nutserts in the body tub. Leave these bolts loose for now for final adjustment 11:00



Soft Top Brackets:



Rear Brackets:



These are bent left and right, note the center hole and the slotted hole (for softtop pin)

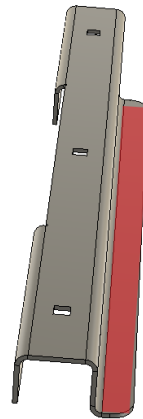
For Softtop: remove the latch hardware prior to installing the rear bracket.

Install the rubber filler piece included in the rear hardware bag, aligning both the hole and cutout for the pin location. Install the rear bracket with the bend facing forward with the bolts provided. Softop can use the existing bolt or be replaced with the one provided in the kit. 13:00 Tighten these bolts all the way down, adjustment may be made at final.



Wingwall assembly:

Vertical Frames:

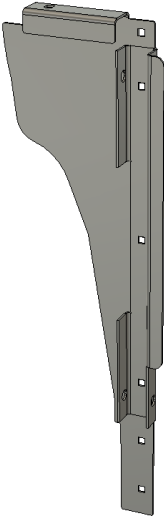


(Best done on a table)

Identify the vertical frames (Shorter) and measure and cut the ½ soft foam (Foam Bag) along the flat flange side of the vertical frames. Peel and stick the foam along the edge 14:50.



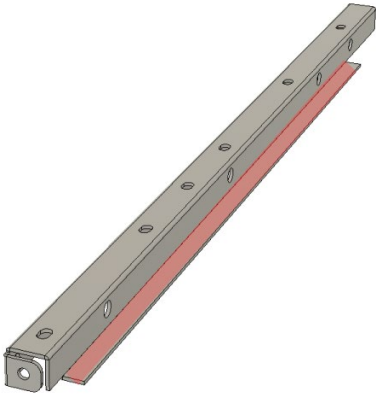
Attach the vertical frames with the flat flange facing outward with the gap at the bottom to the Wing Walls.



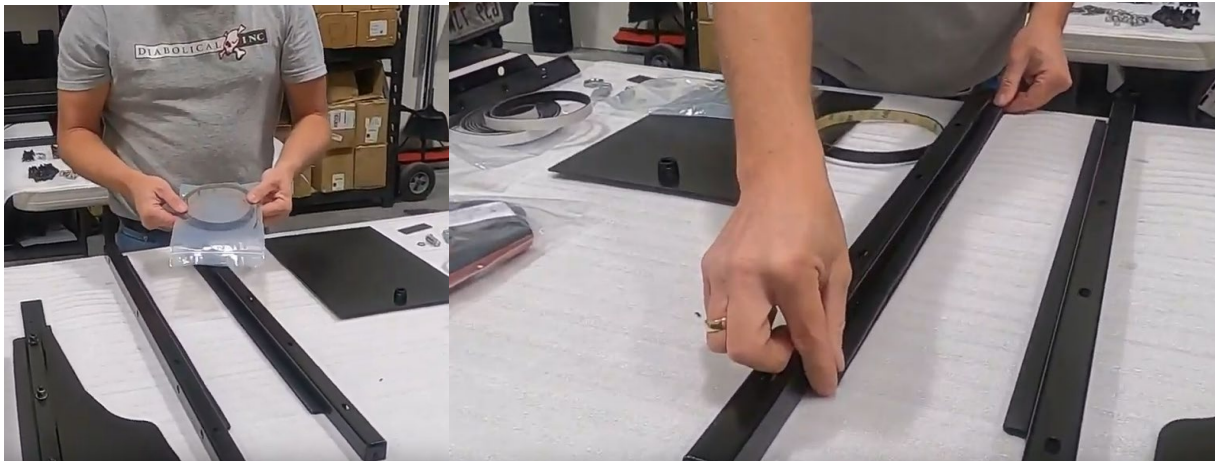
Use the carriage bolts, nuts and washers on the top 3 holes and secure them all the way down with a 7/16 socket. 16:30



Side frames:

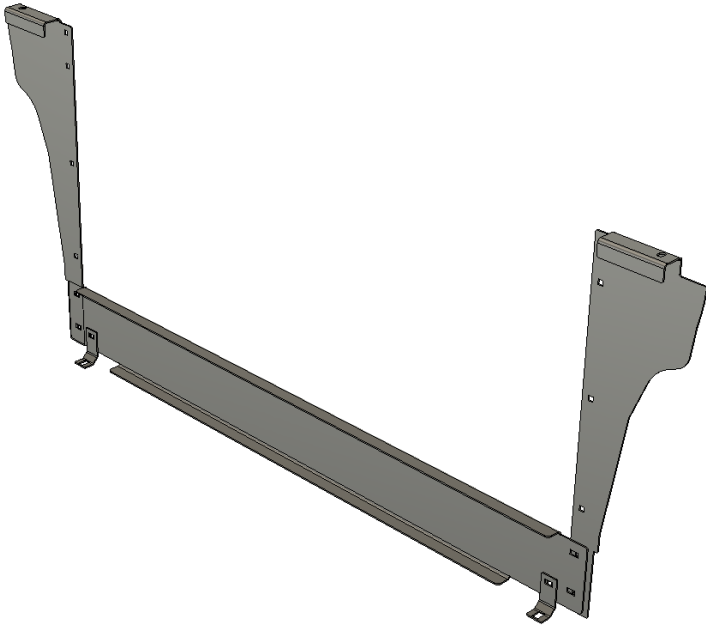


Identify the side frames (longer) and install the peel and stick hard rubber (hard rubber bag) on the side frames. (Trim if needed) 20:00



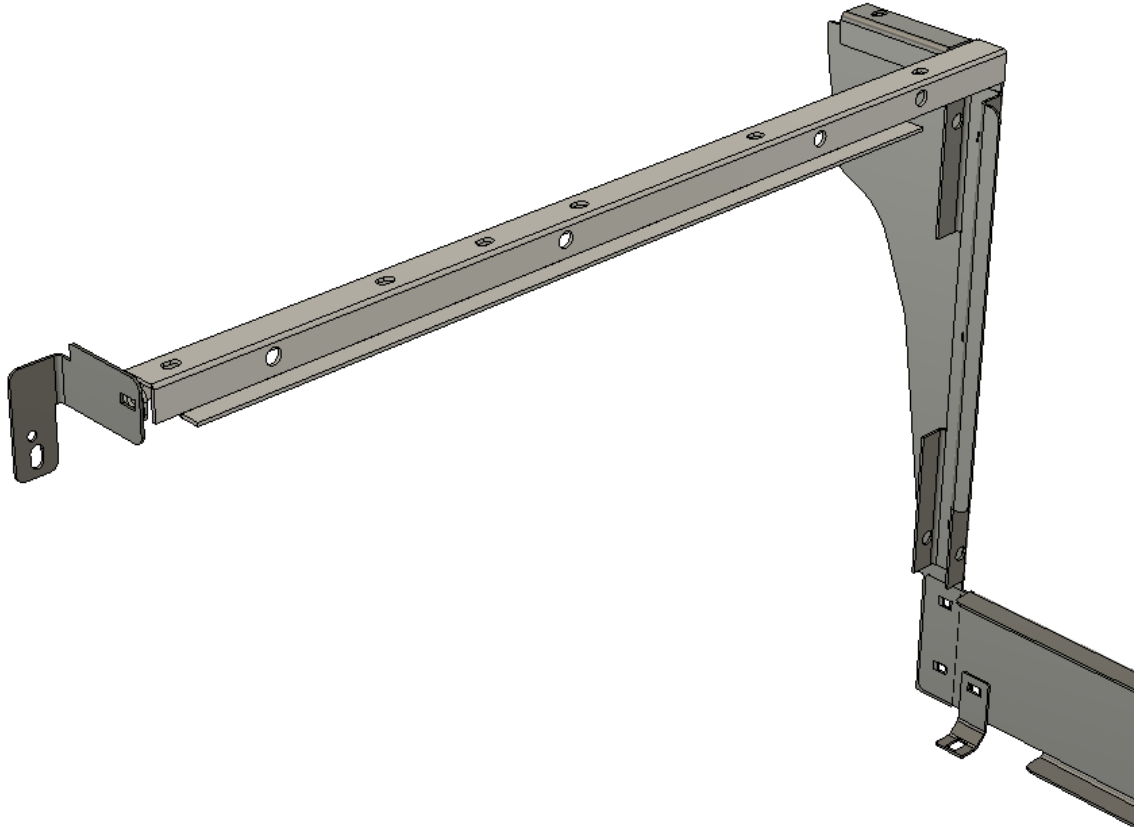
Wing Wall Install: (22:00)

Install both wing walls behind of the lower center wall with 2 carriage bolts, nuts and washers and secure them (3/4 tight) on the rear side 23:00



Side frame: 25:30

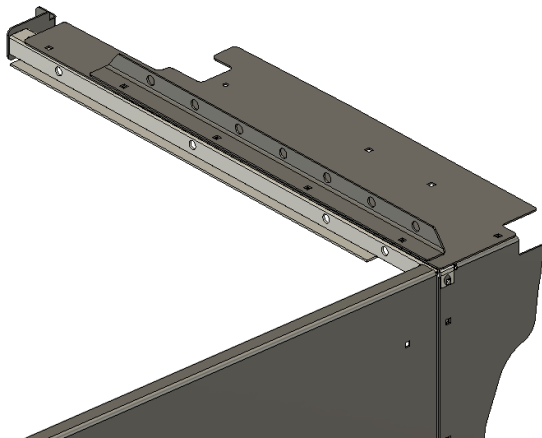
Install the side frames with the gap facing forward and the flange outward. Put a carriage both in both the wing wall and rear bracket to support the frame, secure with washer and nut.



Wingskins: (32:43)



Identify Driver and Passenger wingskins, (Driver has cutout for wiring harness) (33:30) Place the wingskin on top of the side frames placing them just under the body tub and matching the holes in the side frames. Place the tie down rails on top of the wing skin with the flange inward and secure with carriage bolts. (35:30) place washers and nuts on all carriage bolts about $\frac{1}{2}$ way. Align the frame system parallel to the wall to ensure a good 90 degrees and tighten all nuts to $\frac{3}{4}$.





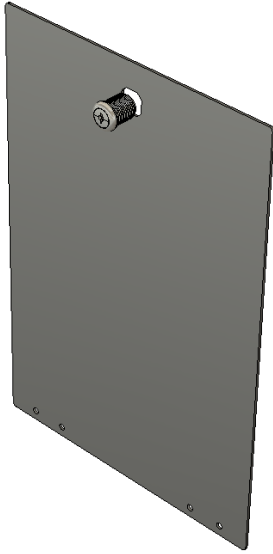
Wall Assembly: (44:30)

Gather the Center wall Panel, Small Hinges and Hardware and the ½ inch peel and stick foam. Measure and cut foam around the top and each side of the opening for the access panel. (45:30).



Access Panel Lock Assembly: (47:00)

Separate the lock assembly from the tumbler using the Philips screw driver (do not lose the small O-ring) Place the plastic lock ring through the hole provided and seat against the panel (This may require a little force or even a rubber mallet.) place the lock ring had tight on the back side of the access panel. (48:20)

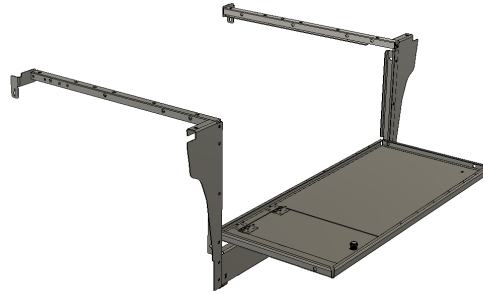


Insert the locking tumbler into the ring and test functionality of the lock. Replace the rubber O-ring and cam lever in the vertical (locked) position with the cam lever facing down (closer to the panel) (49:30)

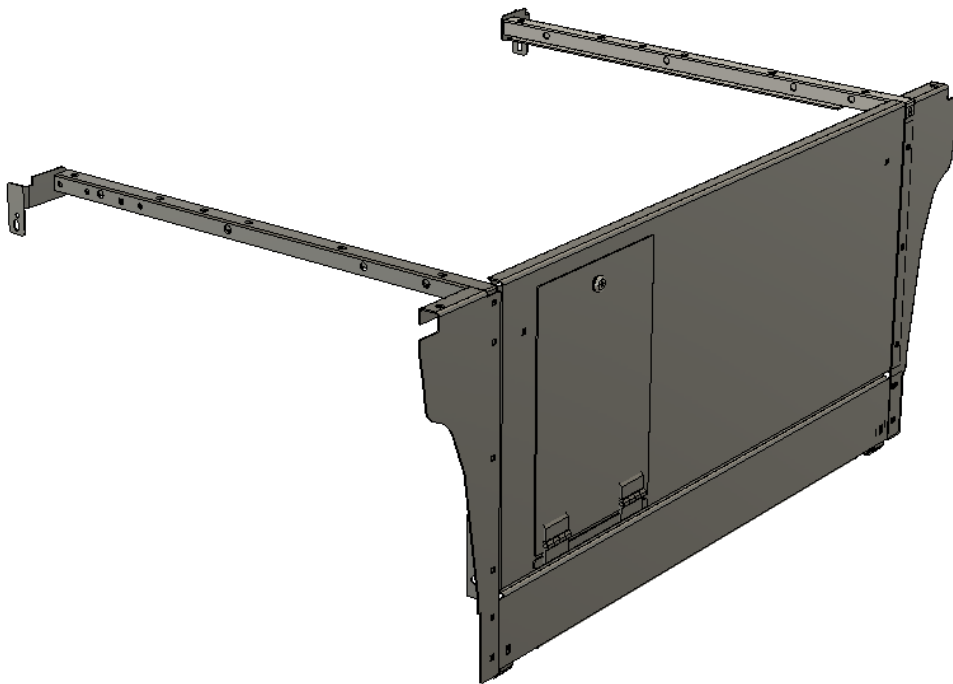
Place the magnet on the back side of the wall at the top center of the opening (51:00) this will prevent metal on metal contact and give the cam lever a strike plate. Gather the access panel spacer and place it over the holes in the center wall (at the bottom of the opening), place the access panel over the opening. Use the SMALL hinges and hardware and place the small hinge in the provided holes. Place a small washer and 8mm nylock nut on the reverse side. Hand tighten these to ensure proper threading. (54:00)



Wall Assembly: Gather the quick release pins, center wall assembly and use some of the excess cardboard and cut some 2 inch shims (1:00:00). Lay the wall assembly parallel to the lower wall and insert a quick release pin in each bottom corner.

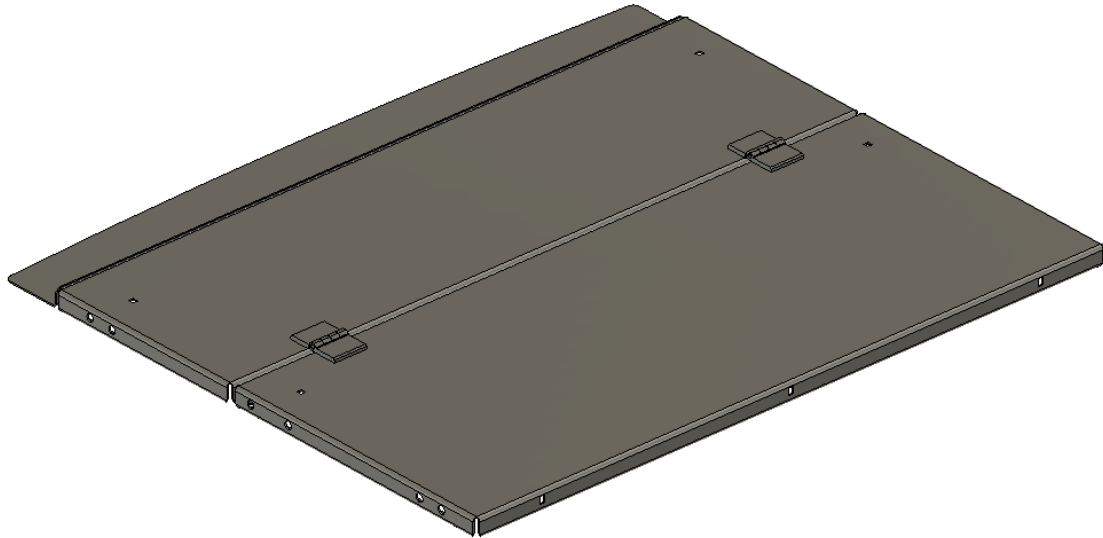


Raise the wall to the vertical position and ensure there is enough gap between the metal parts. If you need to increase the gap insert the cardboard shim and slowly adjust the vertical frames outward to ensure proper gap. Insert the quick release pins in the top of the wall. (1:02:30) Tighten all vertical frame and lower wall bolts to ensure the wall retains the gaps (1:03:50)



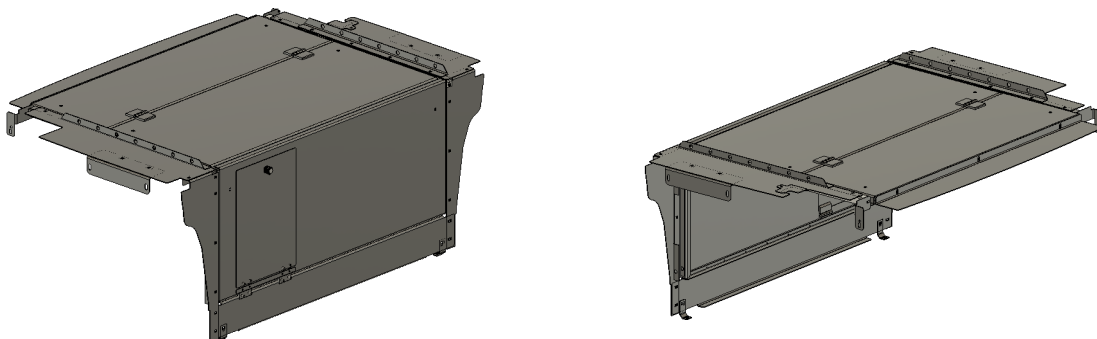
Folding top assembly: (1:05:20) Gather the large and small folding top, the tailskin and the LARGE hinges and hardware. Place the tops in this order Large top, Small Top, Tailskin on a table. Insert the LARGE hinges in the provided holes in the tops connecting the large and small tops(1:06:00). Secure with the hinge hardware Washer and 10mm nuts) about $\frac{3}{4}$ the way. We will adjust and tighten these later. Attach

the tailskin to the small top on the opposite side(1:13:00) (The Tailskin flange should be even with the bottom of the folding top.



Insert a carriage bolt, washer and nut on the reverse side and tighten to $\frac{3}{4}$ with a 7/16 wrench. Attach the rubber bulb seal on the backside of the large folding top (1:17:00) Peel the backing off the bulb seal and apply it to the back side of the large folding top even with the bottom bend.(1:18:30)

Folding top Installation: (1:19:20) Place the wall with the bulb seal forward about 1/3 the way into the frames, the speakers do not allow you to fold the top (1:20:00) all the way when installing so fold the top down before sliding the top into place. Insert a quick release pin into each of the forward holes and middle holes and rear holes to ensure proper pin placement. Once all pins are in tighten the hinges in place.



Tailskin rubber seal: (1:23:20) measure and cut the edge seal to fit the back side of the tailskin, this will help ensure no metal on metal contact between the tailskin and tailgate. Start at one end and press the edge seal against the edge of the tailskin. Ensure the window glass and tailgate close properly. (1:26:00)

End Panels: (1:27:00) These only work with the hard top, so if you are running a soft top do not complete this step. Remove the rear 7/16 bolt from the wing skin and side frame and insert the end cap on top of the wing skin orienting the alignment with the tailskin (1:28:30). Secure with the carriage bolt, washer and nut.

Wire cover: Gather the wire cover and insert through the hole in the drivers wingskin, secure with washer and nut on the bottom side.

